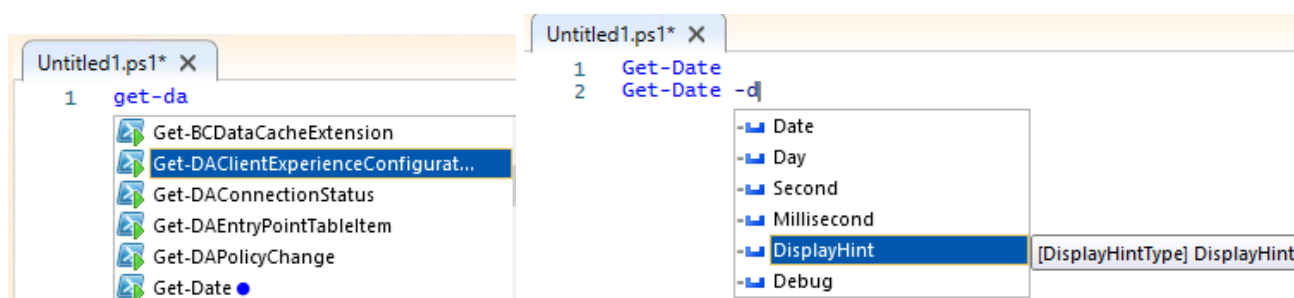
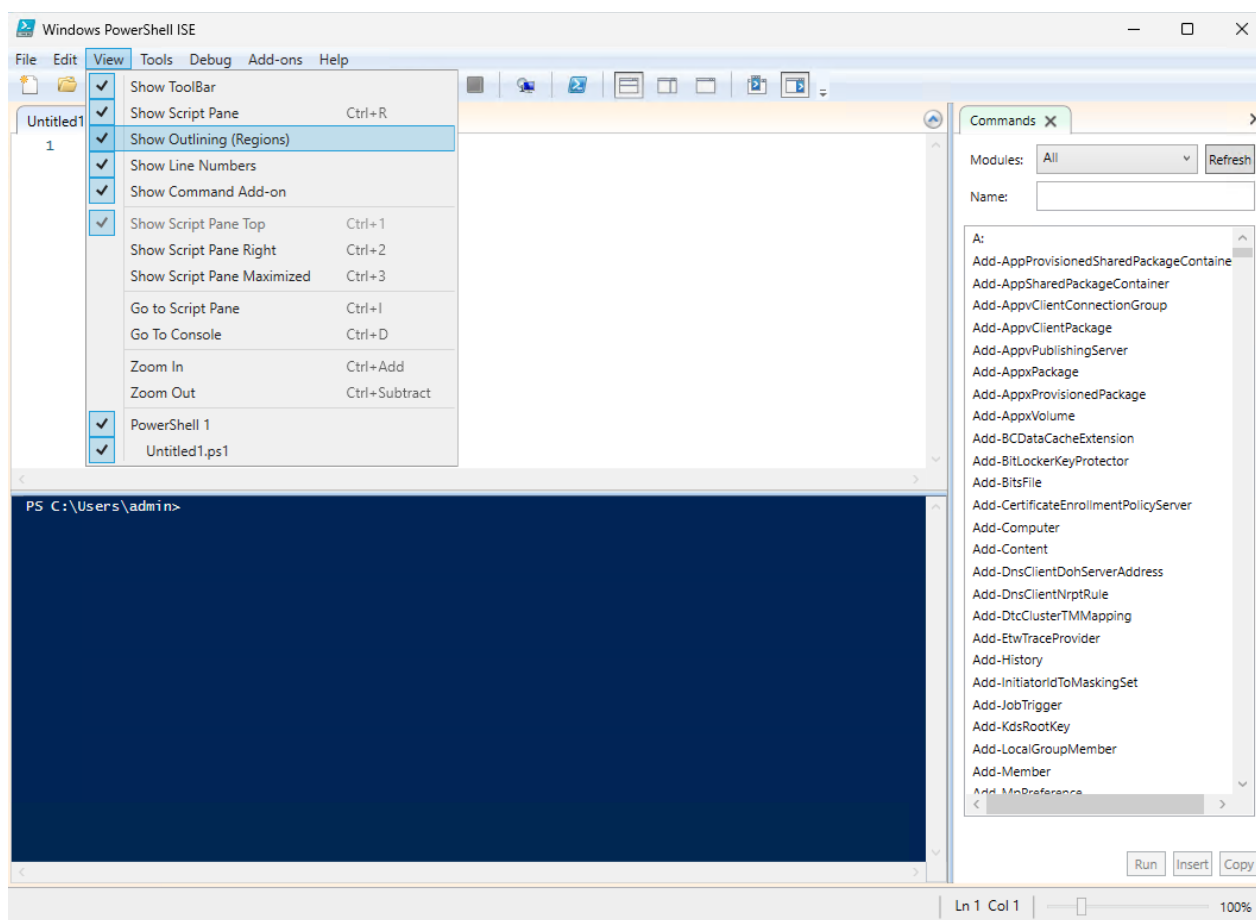
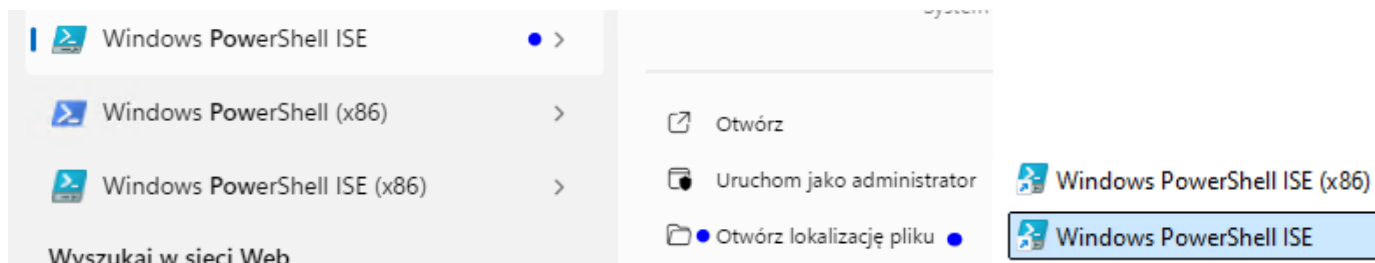
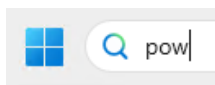


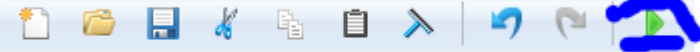
Integrated Script Editor (ISE) – info

Dowiesz się co to jest Integrated Script Editor (ISE)

Nauczysz się Jak wygodnie pracować z ISE

Poznasz najważniejsze skróty klawiaturowe





Untitled1.ps1* X

```
1 Get-Date
2 Get-Date -DisplayHint Date
```

Untitled1.ps1* X

```
1 Get-Date
2 Get-Date -DisplayHint Date
```

```
PS C:\Users\admin> Get-Date
Get-Date -DisplayHint Date

piątek, 28 czerwca 2024 14:31:36
piątek, 28 czerwca 2024

PS C:\Users\admin> |
```

```
PS C:\Users\admin> Show-Command 'Get-Date'
```

Get-Date

Parameters for "Get-Date":

net UFormat

Date:

Day:

DisplayHint:

Format:

Hour:

Millisecond:

Minute:

Month:

Second:

Year:

Common Parameters

Run Copy Cancel

Untitled1.ps1 X

```

1 Get-Date
2 Get-Date -DisplayHint Date

```

PS C:\Users\admin> Show-Command 'Get-Date'

PS C:\Users\admin> Get-Date

piątek, 28 czerwca 2024 14:39:52

PS C:\Users\admin> Stop-Service -InputObject spooler

```

Stop-Service : Service 'Bufor wydruku (spooler)' cannot be stopped due to the following error: Nie można utworzyć usługi spooler na komputerze '.'.
At line:1 char:1
+ Stop-Service -InputObject spooler
+ ~~~~~
+ CategoryInfo          : (System.ServiceProcess.ServiceController:ServiceController) [Stop-Service], ServiceCommandException
+ FullyQualifiedErrorId : CouldNotStopService,Microsoft.PowerShell.Commands.StopServiceCommand

```

PS C:\Users\admin> |

Commands X

Modules: All Refresh

Name: stop-ser

Stop-Service

Name: Stop-Service
Module: Microsoft.PowerShell.Management (Impo

Parameters for "Stop-Service":

InputObject Default DisplayName

InputObject: * spooler

Confirm

Exclude:

Force

Include:

NoWait

PassThru

Whatif

Common Parameters

Run Insert Copy

System

- Windows PowerShell ISE
- Windows PowerShell (x86) Otwórz
- Windows PowerShell ISE (x86) Uruchom jako administrator

Administrator: Windows PowerShell ISE

File Edit View Tools Debug Add-ons Help

Untitled1.ps1 X

```

1

```

PS C:\Windows\system32> Stop-Service -InputObject spooler

PS C:\Windows\system32> |

Commands X

Modules: All Refresh

Name: stop-se

Stop-Service

Name: Stop-Service
Module: Microsoft.PowerShell.Management (Impo

Parameters for "Stop-Service":

InputObject Default DisplayName

InputObject: * spooler

Confirm

Exclude:

Force

Include:

NoWait

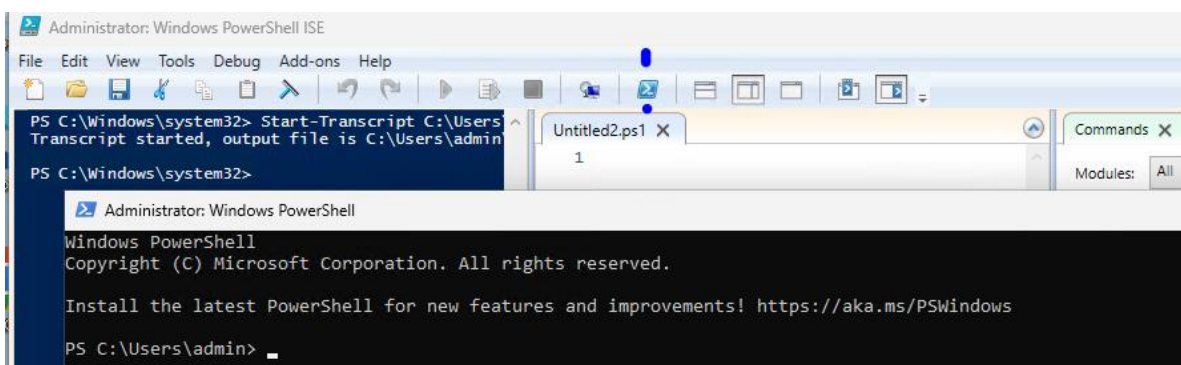
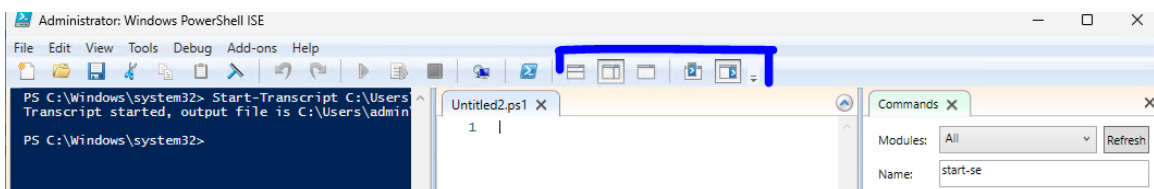
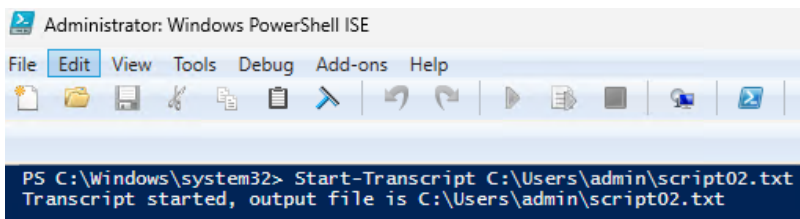
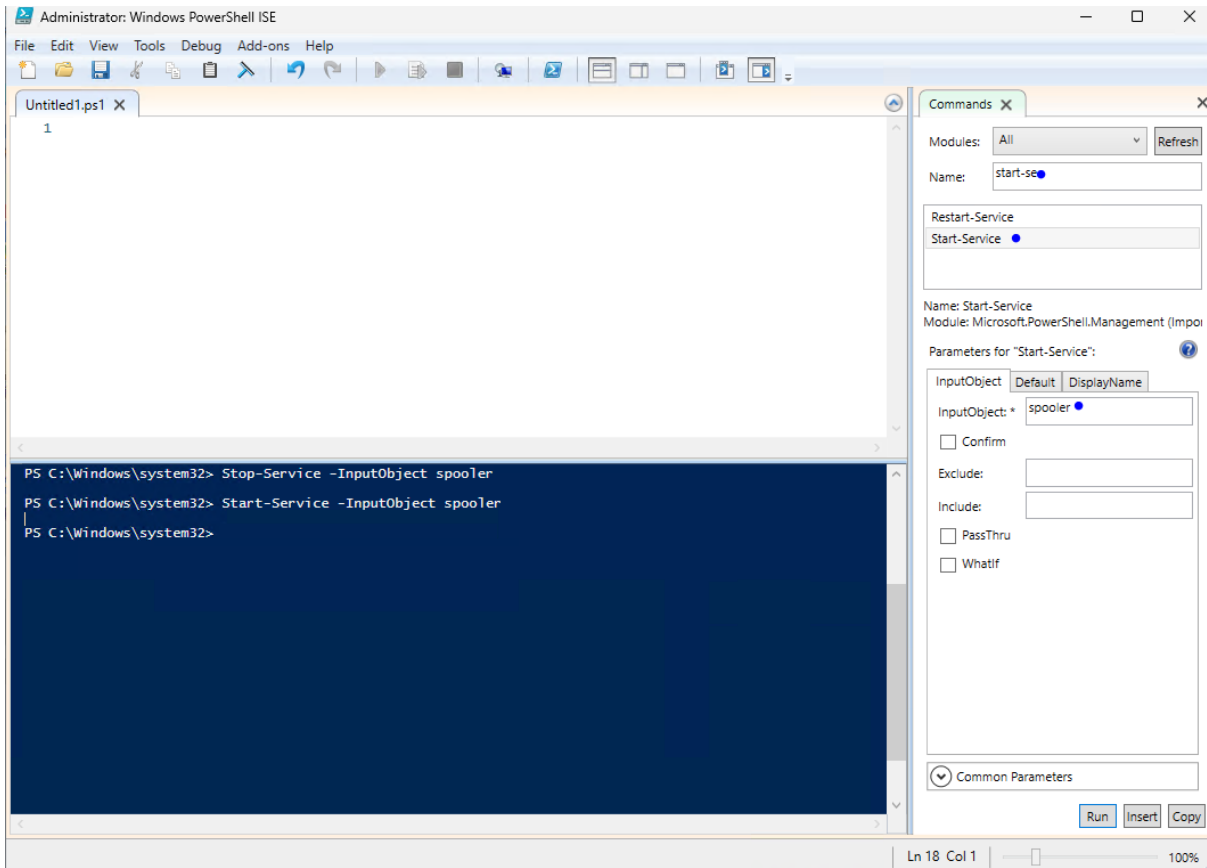
PassThru

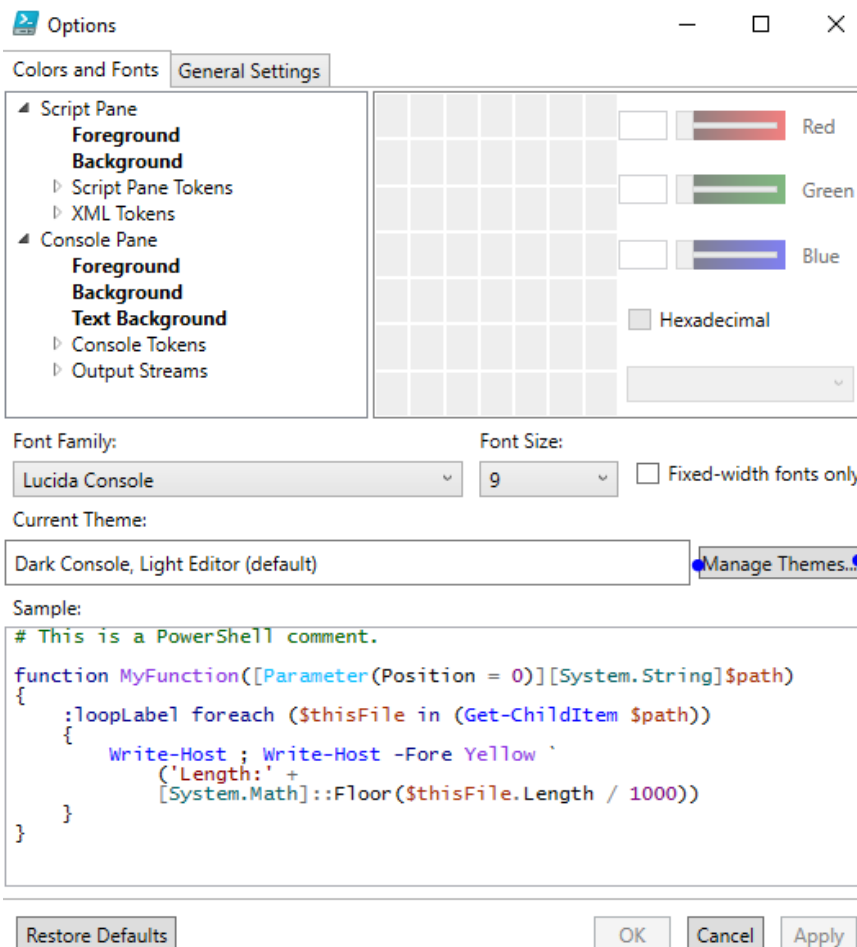
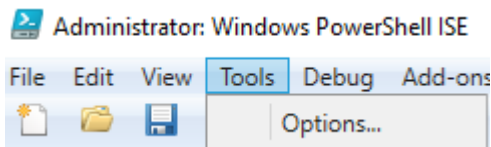
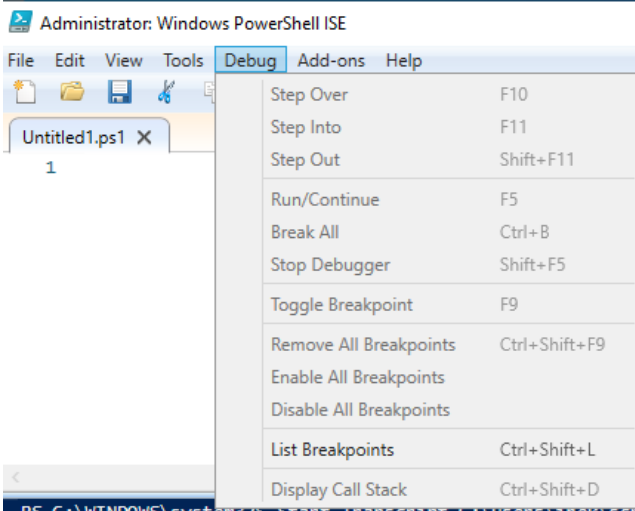
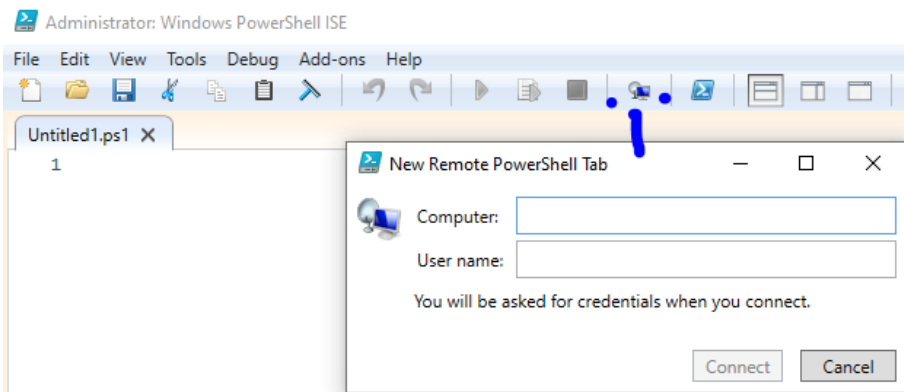
Whatif

Common Parameters

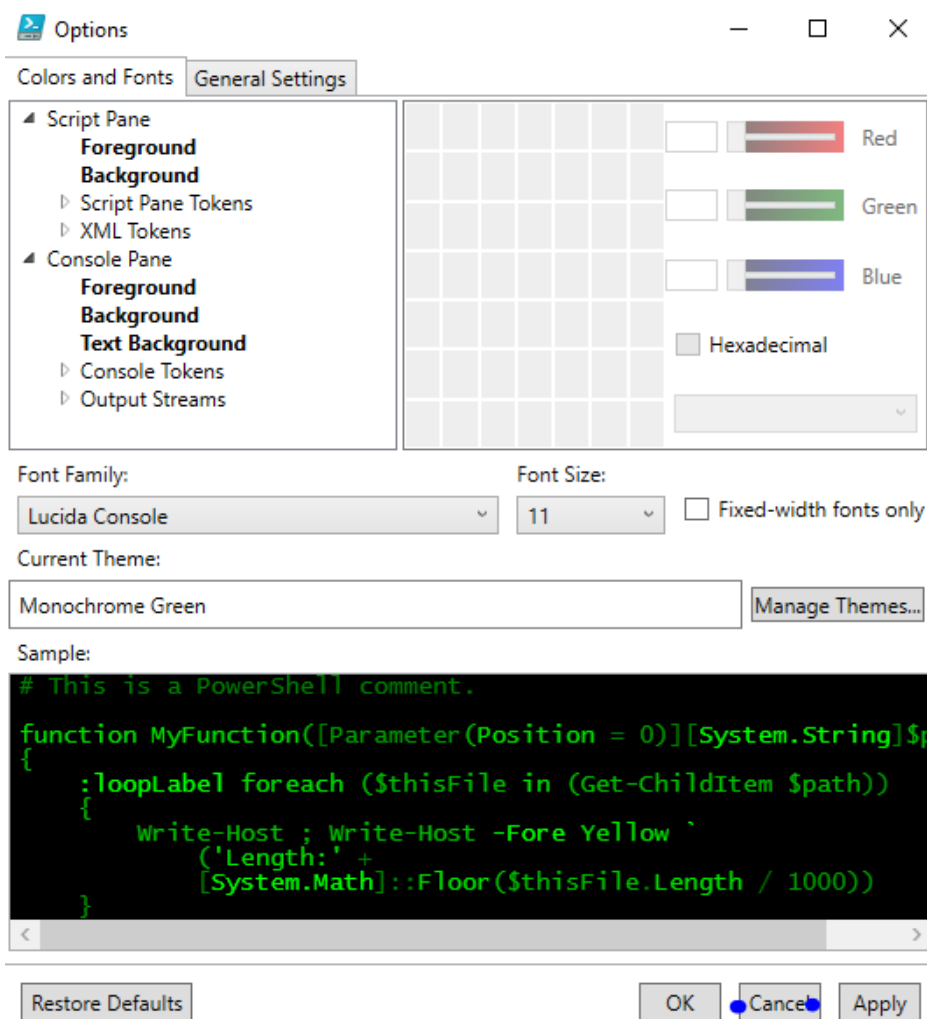
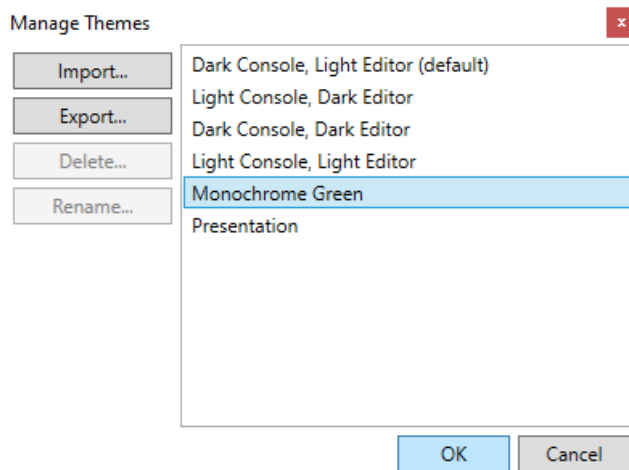
Run Insert Copy

Completed | Ln 3 Col 25 | 100%





Wybierz jeden z dostępnych schematów



```
Administrator: Windows PowerShell ISE
File Edit View Tools Debug Add-ons Help
Untitled2.ps1* X
1 Get-Service
2 Get-Printer
3 Get-Disk
4

PS C:\Windows\system32> Get-Printer

Name                ComputerName      Type              DriverName          P
-----                -
OneNote for Windows 10 (przekierowana sesja) Local             Remote Desktop Easy Print T
OneNote (przekierowana sesja) Local             Remote Desktop Easy Print T
OneNote (Desktop) (przekierowana sesja) Local            Remote Desktop Easy Print T
Microsoft XPS Document Writer Local            Remote Desktop Easy Print T
Microsoft Print to PDF (przekierowana sesja) Local            Remote Desktop Easy Print T
Microsoft Print to PDF Local            Microsoft Print To PDF P
HP LaserJet Professional P... Local            Remote Desktop Easy Print T
HP LaserJet Professional P... Local            Remote Desktop Easy Print T
Hewlett-Packard HP LaserJet... Local            Remote Desktop Easy Print T
Fax (przekierowana sesja: 2) Local            Remote Desktop Easy Print T
Canon MP280 series Printer ... Local            Remote Desktop Easy Print T
AnyDesk Printer (przekierowana sesja) Local            Remote Desktop Easy Print T
```

lub ustawiamy się w linii i naciskamy F8

Dowiedziałeś się co to jest Integrated Script Editor (ISE)

Nauczyłeś się Jak wygodnie pracować z ISE

Poznałeś najważniejsze skróty klawiaturowe