

## How-To Geek

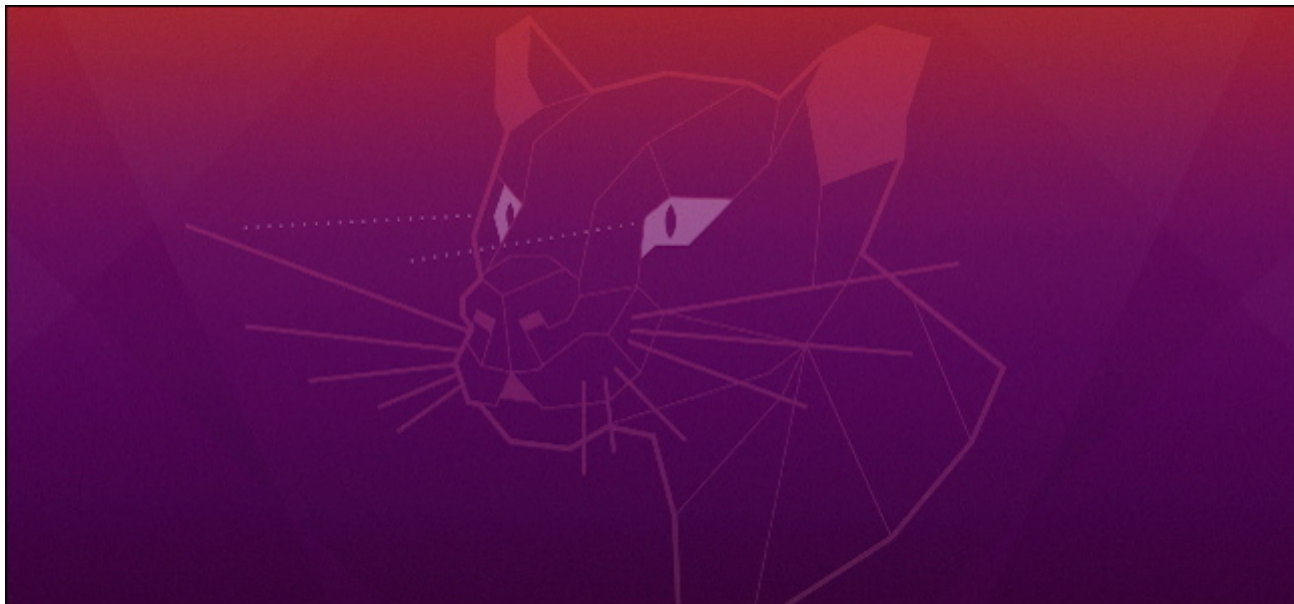
---

# Co nowego w Ubuntu 20.04 LTS „Focal Fossa”



DAVE MCKAY [@thegurkha](#)

23 KWIETNIA 2020, 06:40 EDT



Firma Canonical wypuściła [Ubuntu 20.04 LTS](#) 23 kwietnia 2020 r. To długoterminowe wsparcie zawiera nowy błyszczący motyw pulpitu i tryb ciemny. Pod maską znajdziesz zaktualizowane jądro Linuksa i nowy sposób instalowania aplikacji.

## Poznaj Focal Fossa

Jest wiosna, więc oznacza to, że nowe Ubuntu jest w powietrzu. Tym razem jest to Ubuntu 20.04, o kryptonimie Focal Fossa po [kocim stworzeniu z Madagaskaru](#) . To jest wersja długoterminowej pomocy technicznej (LTS), co oznacza, że będzie ona zaopatrzona w łatki oprogramowania i poprawki bezpieczeństwa na kolejne 5 lat. Wersje inne niż LTS są obsługiwane tylko przez 9 miesięcy.

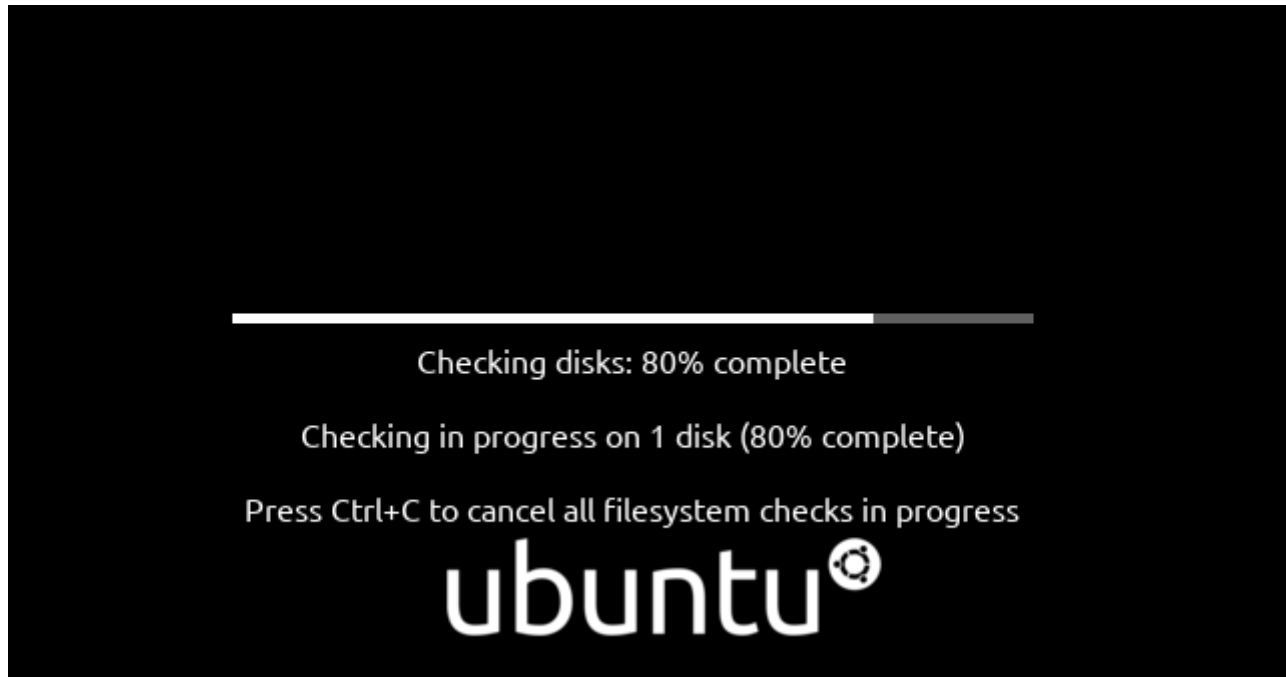
Jeśli wydaje się, że rok 2025 jest daleko. O to chodzi. Istnieje grupa użytkowników, którzy przechodzą tylko z jednego wydania LTS do następnego, używając ich jak odskoczni, aby uniknąć zamoczenia stóp dzięki krótkoterminowym wydaniom wsparcia między nimi. Ponieważ Focal jest wydaniem LTS, ludzie, którzy aktualizują swoje systemy Ubuntu co kilka lat, będą równie zainteresowani tym wydaniem, jak zapaleni aktualizatorzy. Jest tu wiele rzeczy, które powinny zadowolić oba obozy.

Przyjrzyjmy się niektórym wyróżniającym się zmianom.

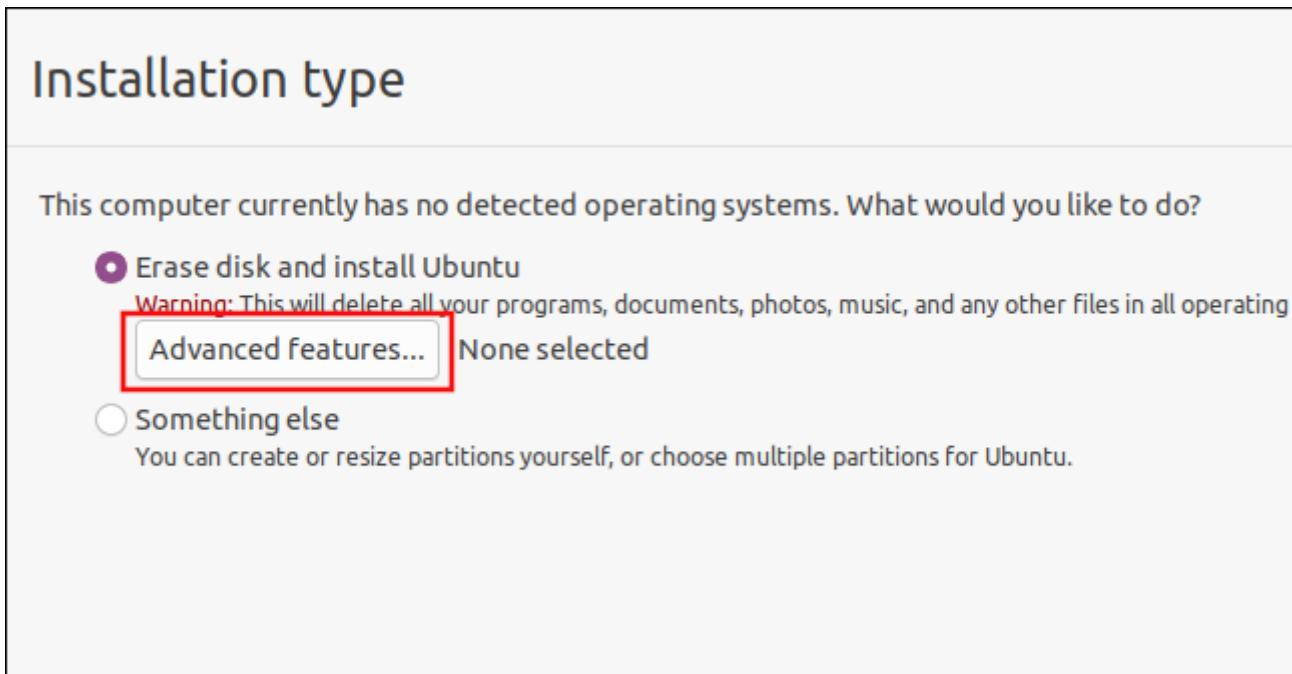
**POWIĄZANE:** [\*8 zabawnych faktów na temat Fossy\*](#)

## Nowe opcje przechowywania podczas instalacji

Nawet podczas instalacji zauważysz różnice. Wprowadzono nową graficzną procedurę sprawdzania dysku twardego z paskiem postępu i procentem pełnych danych.

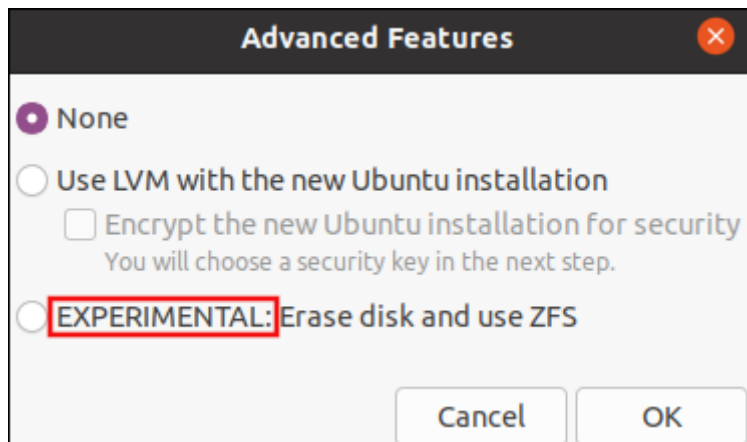


Okno dialogowe „Typ instalacji” ma przycisk „Funkcje zaawansowane”.



Kliknięcie przycisku „Funkcje zaawansowane” wywołuje kolejne okno dialogowe, które daje dwie opcje. Pierwszym z nich jest użycie [Logical Volume Management](#) (LVM). LVM pozwala łączyć dyski fizyczne w jeden dysk logiczny.

Drugą opcją jest użycie [systemu plików ZFS](#). Jest to oznaczone jako „Eksperymentalne” we wszystkich stolicach i nie powinno być stosowane w złości w ważnych systemach. Cały czas staje się coraz bardziej stabilny. Poprzednio opcje te znajdowały się w oknie głównym okna dialogowego „Typ instalacji”. Lekkie odsunięcie ich na bok jest rozsądnym posunięciem.



## GNOME 3.36, nowy motyw i tryb ciemny

Każde wydanie Ubuntu zawiera pewne poprawki do grafiki, a po włączeniu GNOME 3.36.0 kombinacja jest fantastyczna. Nie chodzi o buszu. Wygląda świetnie.

The default wallpaper—inevitably—features the mascot of this release, the Focal Fossa itself.



There's the usual offering of graphic renderings and impressive photographs to choose from if you want to change the desktop wallpaper.

Purple is obviously in this season. When you select an item, it is highlighted in orange just as before, but the accent color is now purple. The color of a selected checkbox, and the color

that is revealed when a sliding switch is set to "On" is purple. Other interactive interface elements echo this subtle purple motif, such as the slider value controls.

The default theme is a modified Yaru theme. Yaru was first introduced in [Ubuntu 18.10](#), so it'll be entirely new to people upgrading from Ubuntu 18.04 LTS.



Folder icons carry the purple motif, too, in a fade-to-orange gradient at the top of the folder icons.



A new "Appearance" setting in the "Settings" dialog lets you change from the default "Standard" theme to a "Light" theme or a "Dark" theme. The "Light" theme uses a light gray title bar for windows, and the "Dark" theme darkens the menus, side panes, and main panel areas of windows, dialogs, and applications.

# The Lock Screen and Login Screen

The lock screen and login screens have received a facelift. Your desktop wallpaper is given a heavy blur and used as the background for these screens. If you've added an image to your user profile, that image is shown on the login screen.

The password field now sports an eye icon. Clicking that will reveal your password. Opinions on this will vary. Security-wise, it isn't great. At home, it probably isn't too bad—and, if you're having difficulty typing your password, it may help. But if your password is too complicated to type accurately, you might consider changing it to a [memorable passphrase instead](#).

You can choose to turn notifications on and off for the lock screen, from within the "Settings" dialog. You can make your choice in two places. The first is in the "Notifications" settings area.

The second is in the "Lock Screen" settings.

## Global Do Not Disturb

A global "Do Not Disturb" setting for notifications has been added to the notification area, which is displayed when you click the on the clock in the top panel.

## Fractional Scaling

Another welcome addition to the Settings dialog is a control for fractional scaling. This was present in Ubuntu 19.10 but was hidden, and not considered ready for prime time. It has been brought into the limelight and now has a simple toggle control.

If you've got a display where the 100% standard scale renders your desktop objects too small to be easily seen, and the 200% scale is too big, this setting will make your use of Ubuntu much more pleasant.



Turning on the "Fractional Scaling" option makes new scale options appear in the "Scale" setting.

Exactly which extra scaling options appear depends on the resolution and geometry of your display. You'll likely see different options on a laptop than on a desktop, for example.

## System Menu

The system menu on the panel has been updated. It now features a "Suspend" option, and the "Settings," "Lock," and "Power" buttons have been moved from the bottom line to their own lines in the menu.

## Ubuntu Now Installs Apps From Snaps

The big change with applications in Ubuntu 20.04 is the Software application itself. Apart from a few packages, this graphical application now installs software from the [Snap Store](#). You can still use `apt-get` or `apt` to install regular versions from the command line.



The interface has been updated to allow you to select a channel to install the snap from. You can select from "Stable," "Candidate," "Beta," or "Edge."

RELATED: [\*How to Work with Snap Packages on Linux\*](#)

These are the updated version of some of the big-name applications included in this release:

- **Thunderbird:** 68.6.0. Thunderbird is slated to have the [Lightning calendar extension](#) bundled with it, but in the late Beta version of Focal Fossa that this article was researched on, Lightning was absent.
- **LibreOffice:** 6.4.2.2
- **Firefox:** 75.0
- **Files:** 3.36.1.1-stable
- **gcc:** 9.3.0
- **OpenSSL:** 1.1.1d

A completely new addition is an application to control GNOME desktop extensions.

Previously, you had to do this through a browser window. Installing extensions will remain as it was, performed through the [GNOME extensions website](#), but managing the extensions that have been installed can now be done in a native application.

A global switch to turn off extensions is a nice touch. If an extension starts misbehaving and affecting your productivity, you can turn them all off and get on with your work. You can do the troubleshooting at a later, less pressured, time.

## An Upgraded Linux Kernel (version 5.2.0-21)

Focal Fossa includes Linux kernel 5.4.0-21. This is the first kernel to come with the long-awaited "[lockdown feature](#)" Linux Security Module. It is disabled by default for fear it may

break existing systems. Nonetheless, it is an exciting development and one to watch.

There are two lockdown modes. Confidentiality mode prevents user-land processes from extracting confidential information from the kernel. The other mode, Integrity, allows the kernel to switch off features that would allow user-land processes to modify the running kernel. Both of these modes even prevent processes launched by the root user or anyone with `sudo` privileges from modifying the kernel.

There are improvements in the way file system cryptographic keys are generated, stored, and discarded by `fscrypt`, the [encryption API and routines used](#) in [ext4](#) and some other file systems.

Support for [ARM processors](#), has been extended, and now includes the [Snapdragon 835](#) System on a Chip ([SoC](#)), which is used in several laptop series by Asus, HP, and Lenovo. Other processors now supported include the [Intel Ice Lake Thunderbolt](#) and the AMD Dali and 2020 [Accelerated Processing Units](#) (APUs.)

The list of hardware devices joining the list of items that should “just work” includes:

- [Wacom MobileStudio pro 13 graphic tablet](#)
- [Logitech Lightspeed receivers](#)
- [Smart Technologies Touch Screens](#)

Support for the [WireGuard](#) virtual private network (VPN) has been added, with the WireGuard protocol being added to the kernel. On the late beta version of Focal Fossa that we used to research this article, the `wireguard` binaries were not preinstalled, although they were available to install. If they're not bundled with the final release, installation is simple.



```
sudo apt-get install wireguard
```

```
sudo apt-get install wireguard-tools
```

## Ubuntu 20.04 Is a Great Release

This is a polished, good-looking, and fast release from Canonical.

The animations seem smoother, and we found no trace of "lagginess" anywhere. The modified Yaru desktop theme is beautiful and polished. And, with the addition of the new fractional scaling feature, it should look fantastic no matter what type of display set up you've got.

The wholesale move to Snaps for software installation may prove contentious but, as always, you have choices. If you've got a down on Snaps, just use the command-line tools for managing software. At least the Amazon app is a goner.

Should you upgrade? The most cautious [18.04 LTS "Bionic Beaver"](#) users will wait a while yet, until any kinks are identified, characterized, and remedied in patches. The 18.04 LTS will receive maintenance updates until 2023, so there's no rush for anyone who's already using an LTS release. Once this release has settled down, there's nothing that should prevent 18.04 users from moving to it.

Casual home users can jump right in and get faster boot times, modern software, better visual experience, and hardware, security, and maintenance patches for the next 5 years—or until they hop onto an interim release.

We won't be surprised if a lot of people adopt the cat-like critter and keep it until 2025.

## READ NEXT

- › [How to Set Environment Variables in Bash on Linux](#)
- › [What Is a "Surveillance" or "NAS" Hard Drive?](#)
- › [How Do Music Identification Apps Like Shazam Work?](#)
- › [How to Use a Digital Camera as a Webcam](#)
- › [How to Remove Email Accounts From the Mail App on iPhone and iPad](#)



### DAVE MCKAY

Dave McKay po raz pierwszy używał komputerów, kiedy perforowana taśma papierowa była w modzie i od tego czasu programuje. Po ponad 30 latach pracy w branży IT jest teraz pełnoetatowym dziennikarzem technologicznym.

W trakcie swojej kariery pracował jako niezależny programista, kierownik międzynarodowego zespołu programistycznego, kierownik projektu usług informatycznych, a ostatnio jako inspektor ochrony danych. Dave jest ewangelistą Linuksa i orędownikiem open source. [PRZECZYTAJ PEŁNE BIOGRAFIE »](#)

*Powyższy artykuł może zawierać linki partnerskie, które pomagają wspierać maniakiem porad.*

How-To Geek to miejsce, w którym zwracasz się, gdy chcesz, aby eksperci wyjaśniali technologię. Od momentu wprowadzenia na rynek w 2006 r. Nasze artykuły zostały przeczytane ponad 1 miliard razy. [Chcieć wiedzieć więcej?](#)